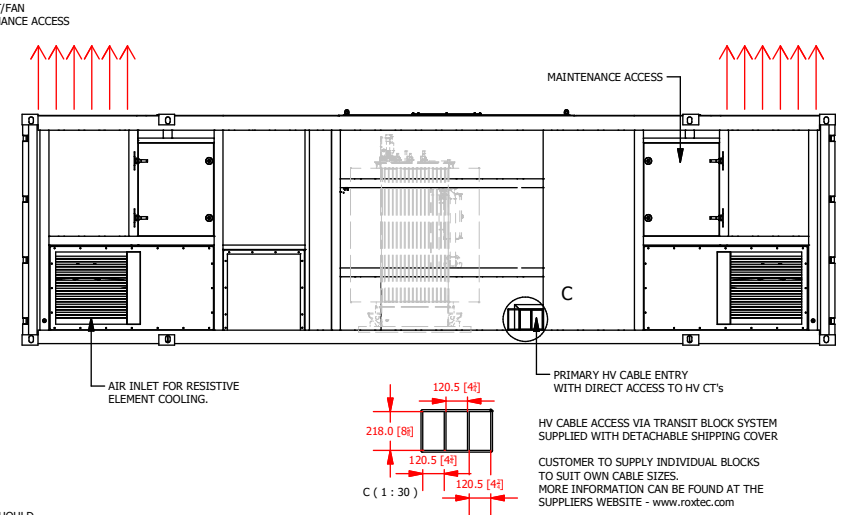
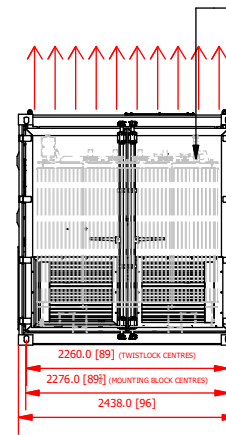
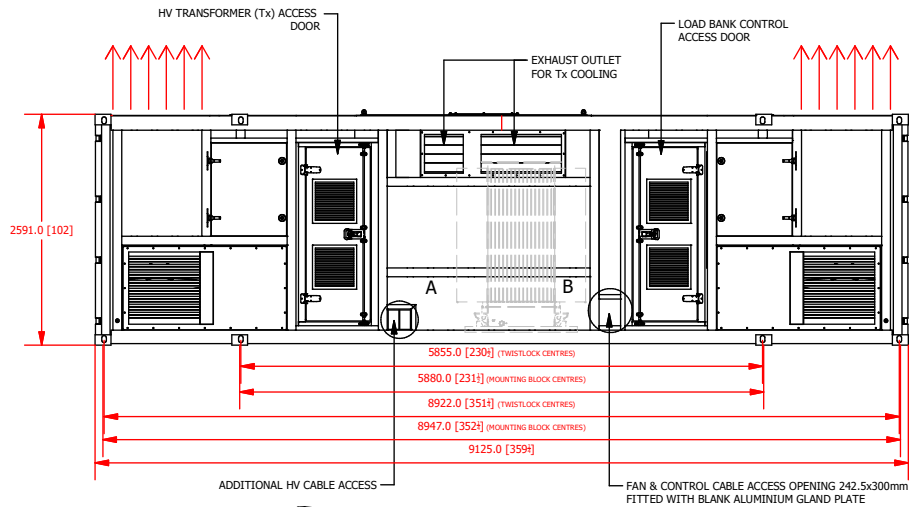
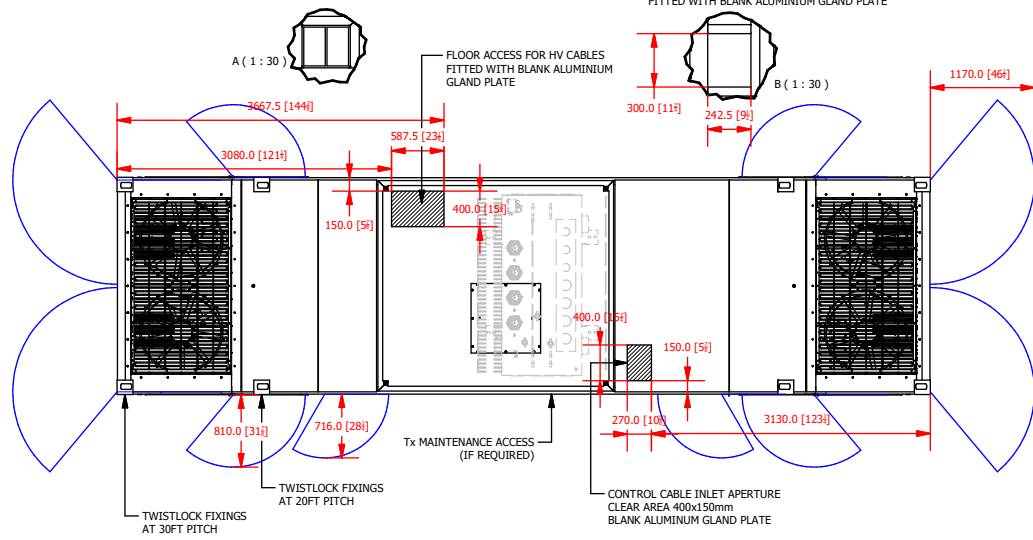


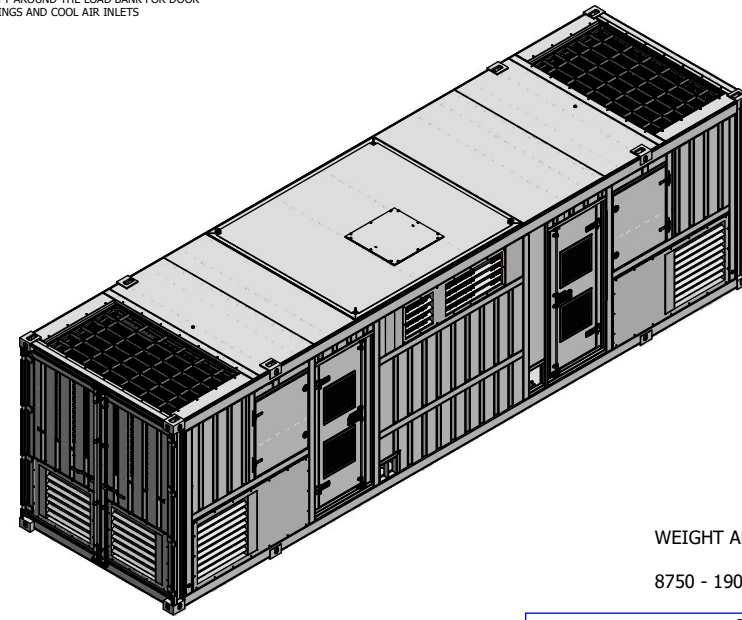
30ft CONTAINERISED LOAD BANK & TRANSFORMER PACKAGE



NOTE:  
AT LEAST 2 METERS OF CLEAR AREA SHOULD BE LEFT AROUND THE LOAD BANK FOR DOOR OPENINGS AND COOL AIR INLETS



NOTES -  
ALL LOUVRES ARE MECHANICALLY OPERATED AND WILL OPEN WHEN POWER IS APPLIED TO THE CONTROL CIRCUIT.



WEIGHT APPROX -  
8750 - 19000kgs

REVISION HISTORY			
REV	DESCRIPTION	DATE	APPROVED
B	POSITION AND SIZE OF FLOOR APERTURES UPDATED	03/04/2023	MM



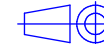
NJ Froment & Co Ltd  
Easton on the Hill  
STAMFORD - PE9 3NP - UK  
Tel: +44 (0) 1780 480033  
avtronpower.com

© NJ Froment & Co. Ltd. This document may not be copied or disclosed in whole or part without prior written approval.

Drawn - M J Musgrave Date - 16/11/2021  
Approved - Date -  
Checked - Date

8750 LOAD BANK  
GENERAL ASSEMBLY  
Scale. NTS  
Dims. mm

1st Angle Projection



CAD Code.  
Part Number.  
Drg No. 03756B01  
Sheet 1 of 1